

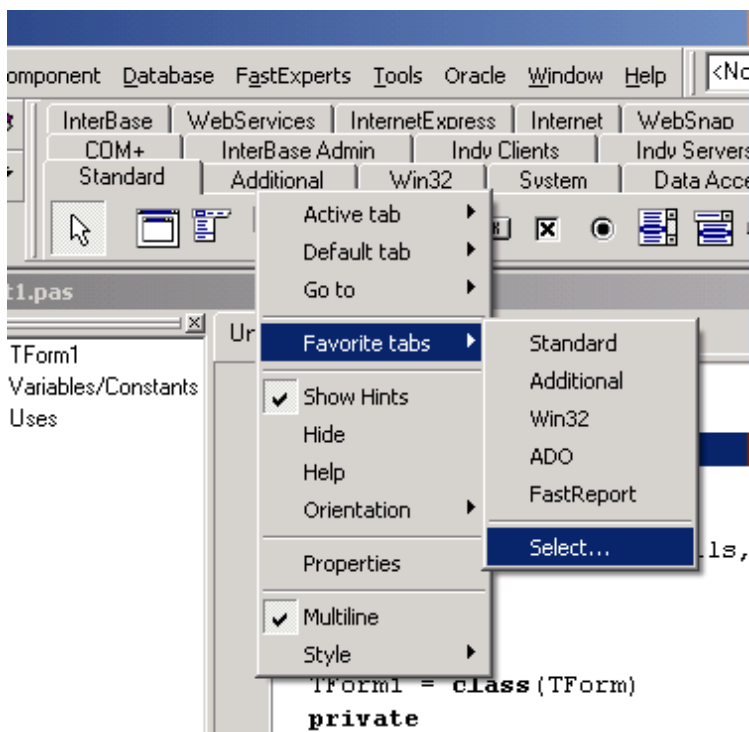
Changes and additions in FastExperts 1.2

New experts

1. «Component Palette enhancements»

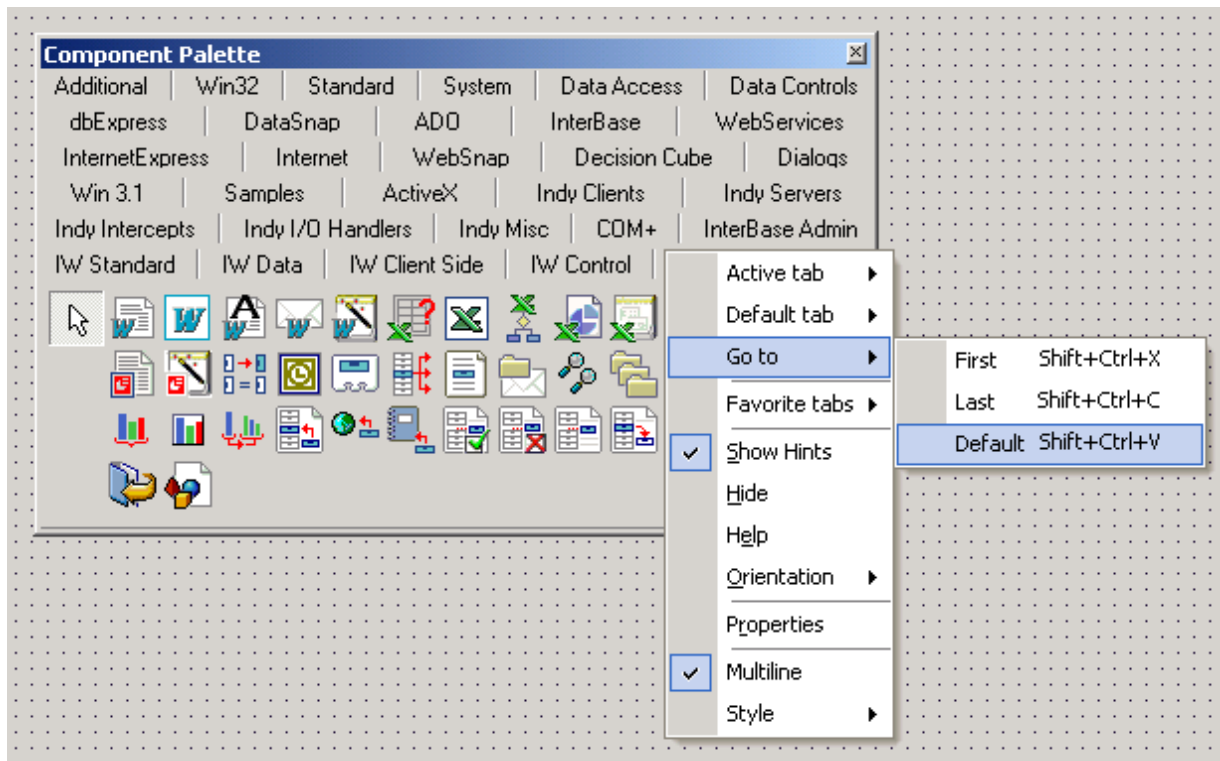
The expert integrates into component palette menu and enables to change the palette external view (multi-linesness, type of bookmarks), and to work with bookmarks in addition (picture 1). The following functions are added:

- *transition from the menu to a required bookmark (active bookmark installation);*
- *assigning a default bookmark and transition to it through the hotkey combination;*
- *fast transition to the first and the last palette bookmarks through the hotkey combination;*
- *assigning favorite bookmarks and working with the list of them;*



Picture 1. Expert integration in component palette menu

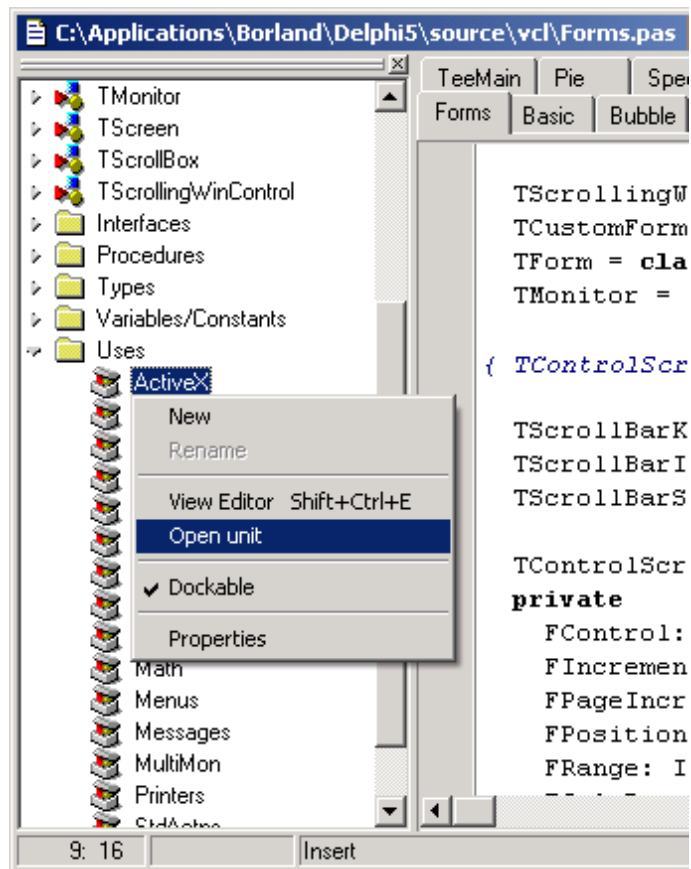
The expert continues to work with component palette correctly even in case when the latter becomes an independent floating window (picture 2).



Picture 2. Floating window of the component palette in Delphi7

2. «Code Explorer enhancements»

The main expert function is an opportunity of fast loading in IDE of one of the units listed in the «Uses» observer section. To perform this, an “Open unit” item is added to the observer menu (picture 3). Depending on settings the unit can be opened with double-click on the required unit, holding the Control key during this - as a variant.

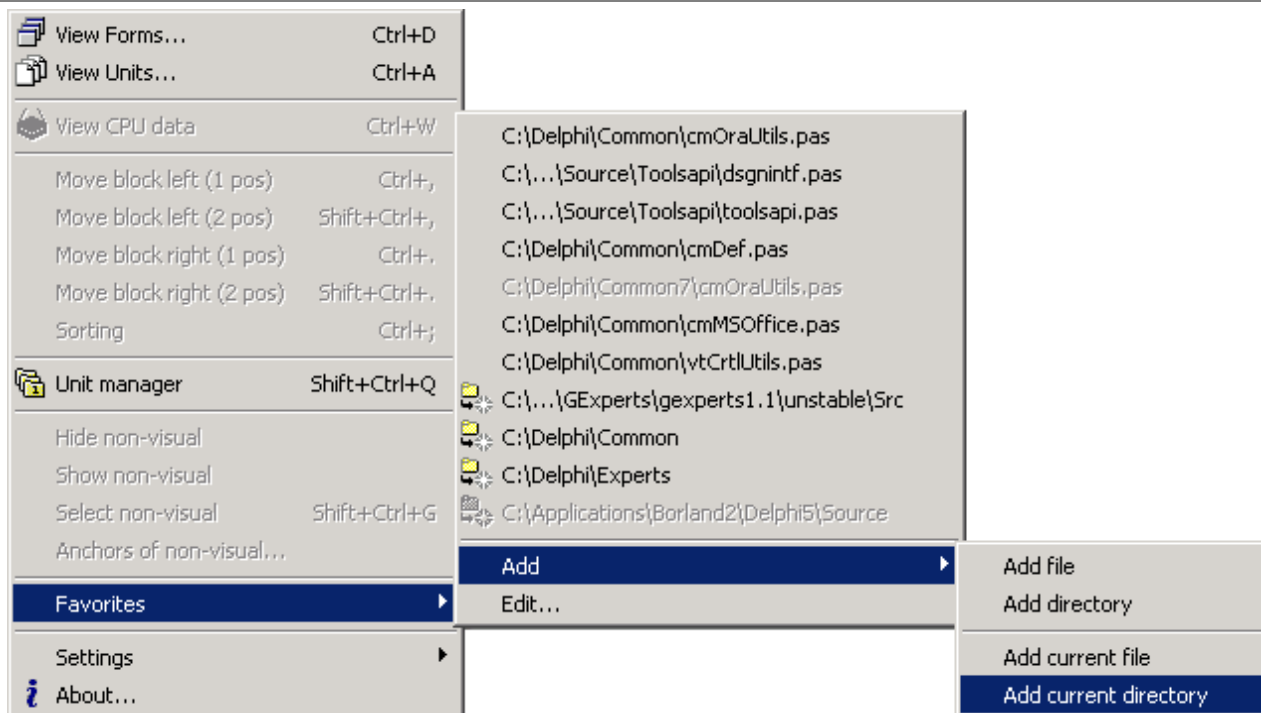


Picture 3. Additional item in the code observer menu

The expert can modify appearance of the code observer a little by substituting different pictograms for denotation of its units opening. Besides, the expert can correct the incorrect positioning of the vertical scrollbar and focus transferring on selecting the bottom elements from the observer list.

3. «Manager of favorites»

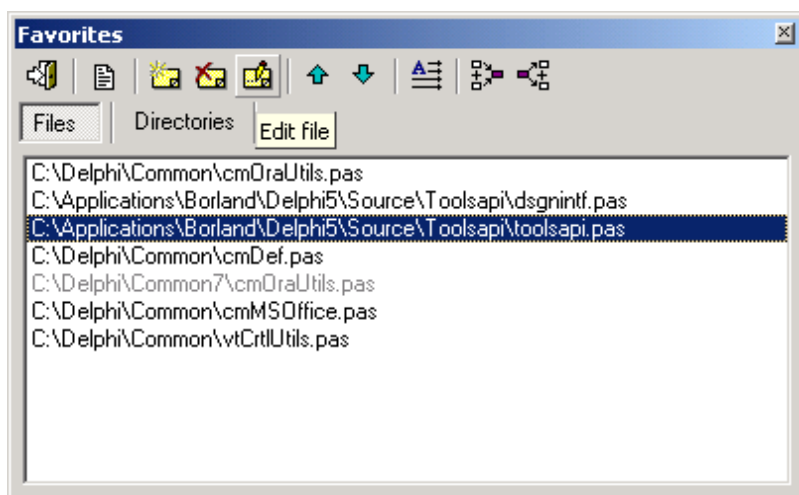
Enables to create files/directories lists for their fast opening. The lists can be enlarged with the current units, opened in the code editor, or via the standard browsing in the tree of disc files and directories. Functions of units adding and opening are accessible from main FastExperts menu (picture 4).



Picture 4. Favorite's manager in FastExperts general menu

There exists a special manager window with expanded functions set as well (picture 5):

- *files/directories opening (directories opening = files selecting and loading from the open directory);*
- *files/directories adding to "favorites";*
- *paths to files/directories editing and saving in "favorites";*
- *files/directories deleting from "favorites";*
- *files/directories order allocation modifying in the list;*
- *direct and reverse sorting of the files/directories list alphabetically;*
- *the general "favorites" list export/import to the text file;*

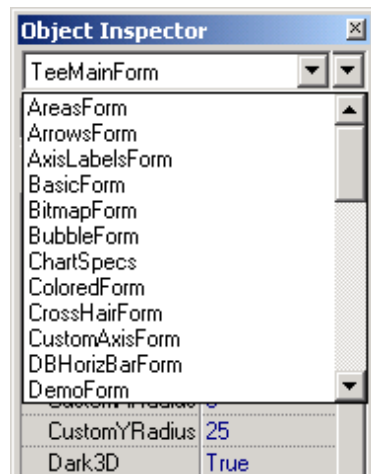
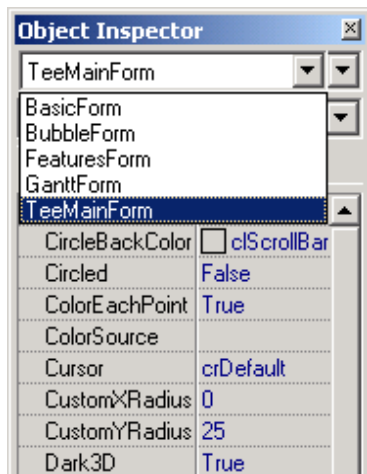


Picture 5. Expert manager settings form

Modified experts

1. New opportunities of the «Manager of the open windows»

Alongside with the list of all forms opened in IDE (picture 6), the expert adds one more list to the object inspector – the list of all existing project forms (picture 7). The form selecting from the list enables to load it in IDE just from the object inspector without addressing to the other instruments help.



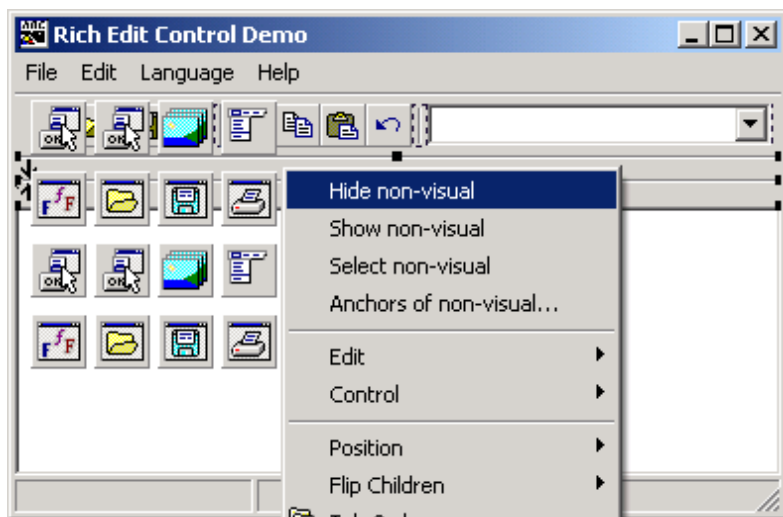
Picture 6. Dropping list of all forms opened in IDE Picture 7. Dropping list of all project forms

2. New opportunities of the «Code Editor enhancements»

In the 4-th and 5-th Delphi/C++Builder versions there appeared an opportunity of adding the list of opened pages (bookmarks), which presents in previous product versions by default, to the editor local menu.

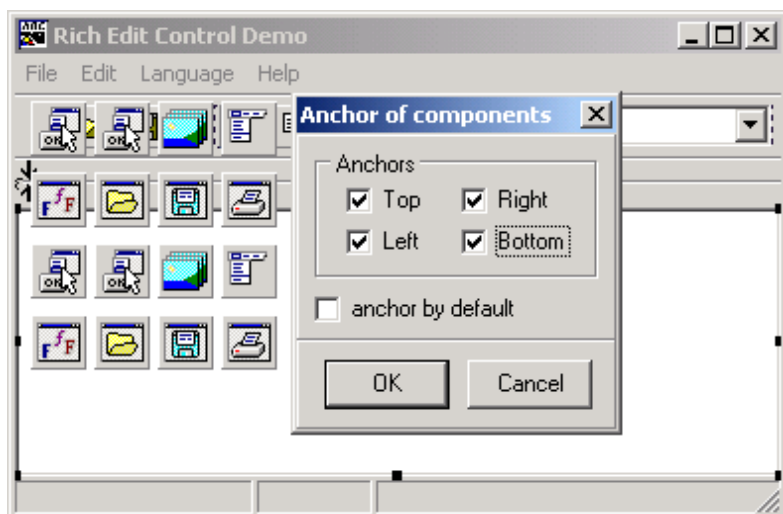
3. Additional functionality of the «Components manager»

Now the manager can quickly select all non-visual components (convenient in group dragging or general properties assignment) (picture 8). Also there appeared an opportunity of binding (positioning) modifying of non-visual components on the form sizes changing.



Picture 8. Integrated component manager menu

The last function allows to “bind” components not only to the left top form edge (that happens by default), but also makes binding to the bottom and right form edge accessible (picture 9). The function is useful only in case, when non-standard component alignment must be observed.



Picture 9. Expert form for non-visual components binding

The expert can integrate into the form or frame designer menu (picture 8). Now this function can be disabled because collisions with the set earlier, indirect experts, using the same integration, are possible. Also one can observe several collisions while working with frames in the 5-th Delphi. No version. That is why all expert functionality operates only via the FastExperts main menu, which modifies its state depending on the current active IDE object, dynamically.